



**It's Not "Just"
Business -
It's A
Partnership**

Automation Services

Highlights

- A global company with over a decade of distributed consulting experience
- US-based with operations in India and across the globe
- Consultants who have worked in engineering-centric manufacturing companies
- Strong design expertise and software development knowledge
- Wide expertise in different areas of engineering
- Extensive work with CAD applications such as SolidWorks, Inventor, Pro-E and Unigraphics
- Best practices established through 10 years of experience with international customers
- ISO 9001-2000 certified with a focus on the future through continuous improvement initiatives
- Stringent security procedures that ensures all confidential information is under maximum control and protection including customer drawings and documents
- Strict adherence to intellectual property rights

**Barry-Wehmiller
International Resources**



Automation Services

Barry-Wehmiller International Resources (BWIR) is part of the consulting group of Barry-Wehmiller Companies, Inc. a diversified company founded in 1885. With headquarters in St. Louis, Missouri and primary operations in India, BWIR offers the combined benefits of the proximity and dependability of a US company with the affordability of distributed operations.

Engineering productivity is a core area that BWIR has focused on for over a decade. BWIR uses software development tools like Visual C++, Visual Basic and .NET to develop automation programs and SolidWorks add-ins. These applications have the capability to directly access SolidWorks functionality to increase productivity. With 10 plus years of engineering and software development experience, we can develop the right automation programs that will increase ROI and decrease design cycle times.

SERVICE OFFERINGS

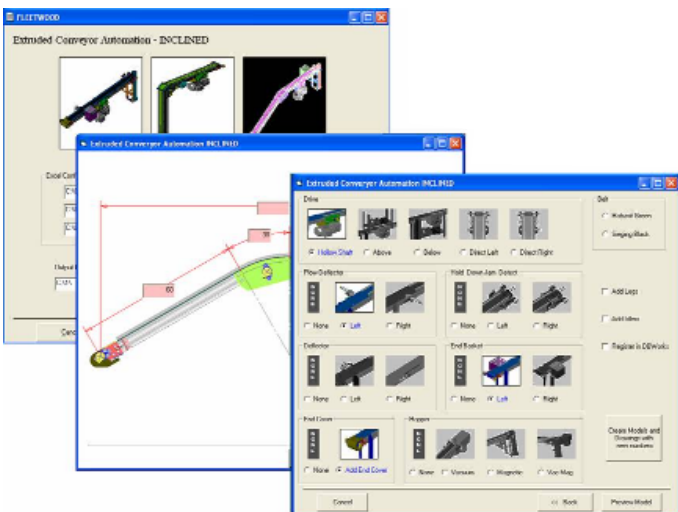
BWIR offers automation services in the following areas:

■ Capturing Design Intent

BWIR's expertise with engineering design allows us to create programs that will capture the design intent of a part or assembly. By changing design parameters, a new variant of an assembly or part is obtained. This has immense potential to save time in creating a variant, particularly where the same component with different parameters are required.

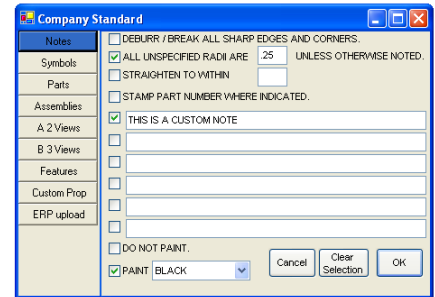
■ Customizing Design Elements

BWIR is adept at creating programs that allow creation of standard geometry features to automate commonly used design elements. For example, a five-speed gearbox assembly requires basic user inputs like input and output speeds, pressure angle and gear type. Based on the inputs, the program generates part models, assembly models and drawings for manufacturing with the validating rules taken into consideration. Similar programs can be developed for machine building and other industries.



■ Drawing Automation

Productivity of drawing creation can be enhanced through BWIR's proficiency in drawing automation. A typical example is automatic dimensioning based on pre-defined rules and company drawing standards. Another example is a program to select and insert standard notes at particular locations in a drawing. The benefit is consistency in drawing layouts which enhances readability.



■ Custom Utilities

As one of the pioneers in 3D CAD, BWIR has created multiple general and application specific utilities over the years. These range from simple batch processes like printing and exporting to those that purge un-referenced features like sketches, data points, axes and planes. This is in addition to setting up custom document templates and properties.

PRODUCT OFFERINGS

As a SolidWorks Research Associate in integration and automation services, BWIR offers a selection of add-on tools. These include:

■ CAD-ERP Bridge

BWIR's CAD-MAPICS Bridge is the one-stop solution for integrating CAD or PDM tools to the ERP system. Functionality includes the search, creation and modification of assembly and part information from within the CAD or PDM interface. This eliminates redundancy of creating the item in CAD and reentry into the ERP system. The bridge has a kernel that is independent of any CAD and ERP system. This allows quick deployment of the tool to work with any CAD and ERP system. Interfaces are currently in place for SolidWorks and AutoCAD with the MAPICS ERP system.

■ Excel-based Configurator

BWIR has developed an Excel-based application that allows the user to quickly develop a configurator for any machine. The Excel sheet serves as the repository for the input data as well as the business rules. Based on the input data and the business rules, the configurator generates models and drawings, greatly increasing productivity.

Barry-Wehmiller International Resources

8020 Forsyth Boulevard • St. Louis, MO 63105 USA • 314/862-8000
23-1/B3 Velachery Tambaram Road • Pallikaranai, Chennai - 600 100 India • + 91 44 4390 9100
www.bwir.com • sales@bwir.com